



## OnePlace NAV “Add-Ons”

OnePlace has identified the following customer business process areas that demand requirements unfulfilled by NAV and has developed “Add-ons” to address them.

### Colour-Size Matrix Entry and Reports

J1PMATRIX provides faster data entry with visual reconciliation. For example, if an Item was sold to a customer in 3 colours and each in 12 sizes that would translate into 36 sales lines in standard NAV as compared with 3 lines using J1PMATRIX.

Simple Ratio Packs are also supported with the related calculation for Total Quantity. The matrix entry and reports applies to sales and purchase quotes, order and invoices.

J1PMATRIX extends standard NAV to provide for setting up Item attributes such as colours, size scales, size runs and colour-size run combinations. It provides automated creation and management of Item Variants and SKUs.

### Sales Revenue and Cost Analysis

J1PANALYSIS first provides extensions to NAV Analysis by Dimensions and Analysis Reporting to support analysis of shipped and invoiced goods by the added attributes of a product in terms of colour and size.

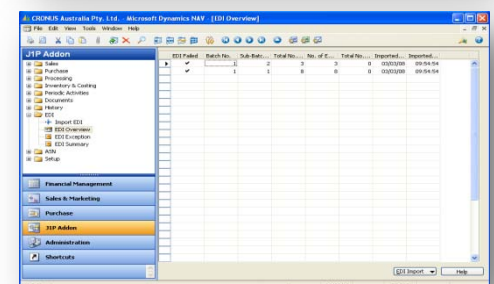
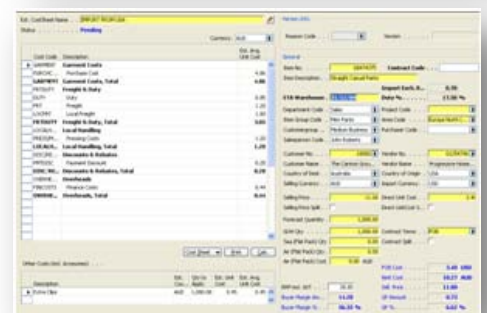
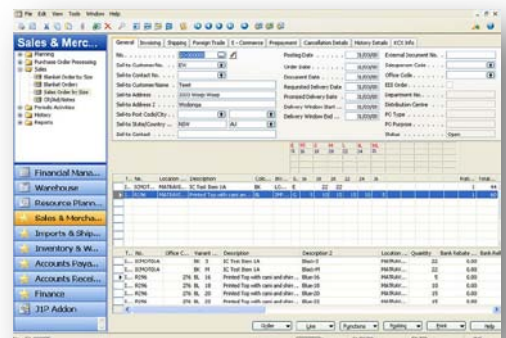
J1PANALYSIS further extends NAV Analysis by Dimensions to include forward orders for sales and cost estimate reporting, planning and later comparison with revenue and costs from actuals. Special costing templates are provided, as indicated on the right, for building up the cost estimates based on costing elements. Those costing elements are compared actual transactions in the system based on user-defined rules established to define how they related.

### EDI PO Processing

J1PEDI supports edited import, error reporting and logging of customer EDI Purchase Orders. It automatically creates or updates Blanket Orders or Sales Orders from successfully imported EDI POs, depending on the status of the EDI PO. It cross-references with the APN/EAN/GTIN assigned to an item variant or a ratio pack of item variants. The EDI PO component of the module requires a pre-defined and common EDI PO template output from the EDI PO Raw Files.

J1PEDI extends standard NAV to provide Customer attributes for EDI Partner Address, EDI Partner Store, Distribution Centre, Distribution Pack Type, and an Allow Consolidation flag. It extends standard NAV to provide automatic APN/EAN/GTIN assignment to a Variant or SKU, import of external file supplied APN/EAN/GTINs, and support for a ratio pack of item variants.

- Ordering multi-dimensional product
- Forward Orders vs. Actuals Analysis with industry tailored Cost Estimation
- EDI Purchase Generated Sales Orders
- Work Order Processing where raw materials and/or resources are supplied
- Imported product consolidated in shipments by vessel or container
- OnePlace PLM Integration with Microsoft Dynamics NAV



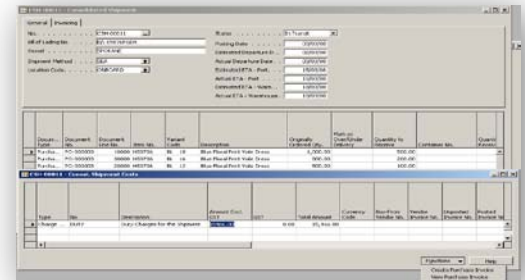
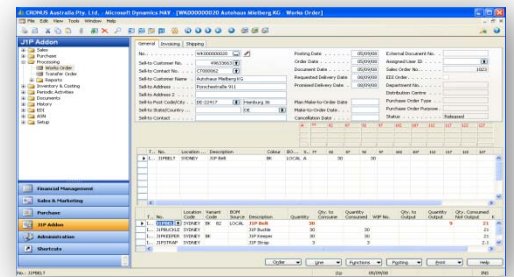
## Work Order Processing

J1PWORKS provides a simpler method of managing manufacturing where the primary requirements are inventory control, tracking and scheduling work on a work order or make-to-order level. It provides simpler planning for demand of materials, consuming materials and resources, and costing the finished goods output. J1PWORKS provides BOM components that can include internal or external resources. J1PWORKS provides multiple stages, but not routing.

J1PWORKS creates Work Orders from Sales Orders or Requisition Worksheets

for "Production" Replenishment sub-assemblies. J1PWORKS provides the creation of Make-To-Orders by Work Order Planning Date to consolidate the manufacturing where demand is for the same item and colour. It records consumption of the BOM components either manually or via automated batch, all the while maintaining the basic WIP accounting.

J1PWORKS extends standard NAV to set up Item BOMs by colour, size and source as well as specific status dates e. g. "cutting date" on sales order headers. J1PWORKS requires J1PMATRIX for Work Order processing.



## Consolidated Shipments and Landed Costing

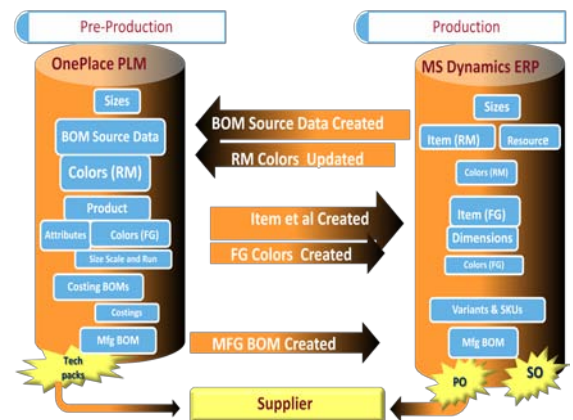
J1PCONSAL provides a faster and simpler method of processing and costing goods received on the same shipment. J1PCONSAL provides for consolidating PO lines by vessel or container, simplifying the receipt of those goods and generating a purchase invoice from those receipts. J1PCONSAL also provides for applying other invoice costs such as landed cost charges applicable to the goods received on the shipment e.g. freight and duty to more accurately derive the item cost.

J1PCONSAL extends NAV to setup additional data on the J1PCONSAL's Consolidated Shipment Header for tracking key milestone shipment dates plus order and shipped quantities for critical reporting and analysis, e.g. Overs and Unders, workflow timelines.

## OnePlace PLM and Microsoft Dynamics NAV Integration

J1PPLMNAV provides triggered NAV Item creation, NAV BOM creation and PLM Source Data creation. A product manager decides to adopt a PLM Product or prototype for production. J1PPLMNAV sends the required data to NAV to trigger the automatic creation of the Item and Item Units of Measure, Item Colour Sizes, Variants and SKUs and Finished Good Colours. The new NAV Item can then be referenced in sales and purchase orders. Note that this feature requires some degree of customization for each prospect based on their business drivers, product classification and reporting requirements.

J1PPLMNAV provides triggered creation of NAV BOM from PLM. A product manager decides to setup a BOM in production for a PLM product ready for manufacture. J1PPLMNAV sends the required data to NAV to trigger the automatic creation of the BOM. J1PPLMNAV requires that all of the components on the BOM are pre-existing Items and Resources in NAV.



J1PPLMNAV provides triggered creation of PLM Source Data Materials, Resources and their required Colours from NAV. A production manager decides to update PLM with NAV raw materials, sub-assembly materials and resources for building BOMs in PLM to send to NAV. J1PPLMNAV sends the required data to PLM to trigger the automatic creation or update of Source Data Materials and Resources as well as their required colors. It also flags this source data as pre-existing in the ERP so that it can be used to create PLM BOMs and passed to NAV. Note in J1PPLMNAV NAV BOM Creation from PLM.

For more information, contact Eclipse

1300 660 471

[www.eclipsecomputing.com.au](http://www.eclipsecomputing.com.au)



0800 472 962

[www.eclipsecomputing.co.nz](http://www.eclipsecomputing.co.nz)

